

National Parks and Wildlife Service

Conservation Objectives Series

Tralee Bay Complex SPA 004188



*An Roinn
Ealaíon, Oidhreachta agus Gaeltachta*

*Department of
Arts, Heritage and the Gaeltacht*



**National Parks and Wildlife Service,
Department of Arts, Heritage and the Gaeltacht,**

7 Ely Place, Dublin 2, Ireland.

Web: www.npws.ie

E-mail: nature.conservation@ahg.gov.ie

Citation:

**NPWS (201) Conservation Objectives: Tralee Bay Complex SPA 004188.
Version 1. National Parks and Wildlife Service, Department of Arts, Heritage
and the Gaeltacht.**

Series Editor: Rebecca Jeffrey

ISSN 2009-4086

Introduction

The overall aim of the Habitats Directive is to maintain or restore the favourable conservation status of habitats and species of community interest. These habitats and species are listed in the Habitats and Birds Directives and Special Areas of Conservation and Special Protection Areas are designated to afford protection to the most vulnerable of them. These two designations are collectively known as the Natura 2000 network.

European and national legislation places a collective obligation on Ireland and its citizens to maintain habitats and species in the Natura 2000 network at favourable conservation condition. The Government and its agencies are responsible for the implementation and enforcement of regulations that will ensure the ecological integrity of these sites.

A site-specific conservation objective aims to define favourable conservation condition for a particular habitat or species at that site.

The maintenance of habitats and species within Natura 2000 sites at favourable conservation condition will contribute to the overall maintenance of favourable conservation status of those habitats and species at a national level.

Favourable conservation status of a habitat is achieved when:

- its natural range, and area it covers within that range, are stable or increasing, and
- the specific structure and functions which are necessary for its long-term maintenance exist and are likely to continue to exist for the foreseeable future, and
- the conservation status of its typical species is favourable.

The favourable conservation status of a species is achieved when:

- population dynamics data on the species concerned indicate that it is maintaining itself on a long-term basis as a viable component of its natural habitats, and
- the natural range of the species is neither being reduced nor is likely to be reduced for the foreseeable future, and
- there is, and will probably continue to be, a sufficiently large habitat to maintain its populations on a long-term basis.

Notes/Guidelines:

1. The targets given in these conservation objectives are based on best available information at the time of writing. As more information becomes available, targets for attributes may change. These will be updated periodically, as necessary.
2. An appropriate assessment based on these conservation objectives will remain valid even if the targets are subsequently updated, providing they were the most recent objectives available when the assessment was carried out. It is essential that the date and version are included when objectives are cited.
3. Assessments cannot consider an attribute in isolation from the others listed for that habitat or species, or for other habitats and species listed for that site. A plan or project with an apparently small impact on one attribute may have a significant impact on another.
4. Please note that the maps included in this document do not necessarily show the entire extent of the habitats and species for which the site is listed. This should be borne in mind when appropriate assessments are being carried out.
5. When using these objectives, it is essential that the relevant backing/supporting documents are consulted, particularly where instructed in the targets or notes for a particular attribute.

Qualifying Interests

* indicates a priority habitat under the Habitats Directive

004188	Tralee Bay Complex SPA
A038	Whooper Swan <i>Cygnus cygnus</i>
A046	Brent Goose <i>Branta bernicla hrota</i>
A048	Shelduck <i>Tadorna tadorna</i>
A050	Wigeon <i>Anas penelope</i>
A052	Teal <i>Anas crecca</i>
A053	Mallard <i>Anas platyrhynchos</i>
A054	Pintail <i>Anas acuta</i>
A062	Scaup <i>Aythya marila</i>
A130	Oystercatcher <i>Haematopus ostralegus</i>
A137	Ringed Plover <i>Charadrius hiaticula</i>
A140	Golden Plover <i>Pluvialis apricaria</i>
A141	Grey Plover <i>Pluvialis squatarola</i>
A142	Lapwing <i>Vanellus vanellus</i>
A144	Sanderling <i>Calidris alba</i>
A149	Dunlin <i>Calidris alpina alpina</i>
A156	Black-tailed Godwit <i>Limosa limosa</i>
A157	Bar-tailed Godwit <i>Limosa lapponica</i>
A160	Curlew <i>Numenius arquata</i>
A162	Redshank <i>Tringa totanus</i>
A169	Turnstone <i>Arenaria interpres</i>
A179	Black-headed Gull <i>Chroicocephalus ridibundus</i>
A182	Common Gull <i>Larus canus</i>
A999	Wetlands

Please note that this SPA overlaps with Akeragh, Banna and Barrow Harbour SAC (000332) and Tralee Bay and Magharees Peninsula, West to Cloghane SAC (002070). It adjoins Dingle Peninsula SPA (004153). See map 2. The conservation objectives for this site should be used in conjunction with those for overlapping and adjacent sites as appropriate.

Supporting documents, relevant reports & publications

Supporting documents, NPWS reports and publications are available for download from: www.npws.ie/Publications

NPWS Documents

Year : 2014
Title : Tralee Bay Complex SPA (site code: 4188) Conservation objectives supporting document V1
Author : NPWS
Series : Conservation objectives supporting document

A038 Whooper Swan *Cygnus cygnus*

To maintain the favourable conservation condition of Whooper Swan in Tralee Bay Complex SPA, which is defined by the following list of attributes and targets:

Attribute	Measure	Target	Notes
Population trend	Percentage change	Long term population trend stable or increasing	Waterbird population trends are presented in part four of conservation objectives supporting document
Distribution	Range, timing and intensity of use of areas	No significant decrease in the range, timing and intensity of use of areas by whooper swan, other than that occurring from natural patterns of variation	Waterbird distribution from the 2009/2010 waterbird survey programme is discussed in part four of the conservation objectives supporting document

A046 Brent Goose *Branta bernicla hrota*

To maintain the favourable conservation condition of Light-bellied Brent Goose in Tralee Bay Complex SPA, which is defined by the following list of attributes and targets:

Attribute	Measure	Target	Notes
Population trend	Percentage change	Long term population trend stable or increasing	Waterbird population trends are presented in part four of the conservation objectives supporting document
Distribution	Range, timing and intensity of use of areas	No significant decrease in the range, timing and intensity of use of areas by light-bellied brent goose, other than that occurring from natural patterns of variation	Waterbird distribution from the 2009/2010 waterbird survey programme is discussed in part five of the conservation objectives supporting document

A048 **Shelduck *Tadorna tadorna***

To maintain the favourable conservation condition of Shelduck in Tralee Bay Complex SPA, which is defined by the following list of attributes and targets:

Attribute	Measure	Target	Notes
Population trend	Percentage change	Long term population trend stable or increasing	Waterbird population trends are presented in part four of the conservation objectives supporting document
Distribution	Range, timing and intensity of use of areas	No significant decrease in the range, timing and intensity of use of areas by shelduck, other than that occurring from natural patterns of variation	Waterbird distribution from the 2009/2010 waterbird survey programme is discussed in part five of the conservation objectives supporting document

A050 Wigeon *Anas penelope*

To maintain the favourable conservation condition of Wigeon in Tralee Bay Complex SPA, which is defined by the following list of attributes and targets:

Attribute	Measure	Target	Notes
Population trend	Percentage change	Long term population trend stable or increasing	Waterbird population trends are presented in part four of the conservation objectives supporting document
Distribution	Range, timing and intensity of use of areas	No significant decrease in the range, timing and intensity of use of areas by wigeon, other than that occurring from natural patterns of variation	Waterbird distribution from the 2009/2010 waterbird survey programme is discussed in part five of the conservation objectives supporting document

Conservation Objectives for : Tralee Bay Complex SPA [004188]

A052 Teal *Anas crecca*

To maintain the favourable conservation condition of Teal in Tralee Bay Complex SPA, which is defined by the following list of attributes and targets:

Attribute	Measure	Target	Notes
Population trend	Percentage change	Long term population trend stable or increasing	Waterbird population trends are presented in part four of the conservation objectives supporting document
Distribution	Range, timing and intensity of use of areas	No significant decrease in the range, timing and intensity of use of areas by teal, other than that occurring from natural patterns of variation	Waterbird distribution from the 2009/2010 waterbird survey programme is discussed in part five of the conservation objectives supporting document

Conservation Objectives for : Tralee Bay Complex SPA [004188]

A053 Mallard *Anas platyrhynchos*

To maintain the favourable conservation condition of Mallard in Tralee Bay Complex SPA, which is defined by the following list of attributes and targets:

Attribute	Measure	Target	Notes
Population trend	Percentage change	Long term population trend stable or increasing	Waterbird population trends are presented in part four of the conservation objectives supporting document
Distribution	Range, timing and intensity of use of areas	No significant decrease in the range, timing and intensity of use of areas by mallard, other than that occurring from natural patterns of variation	Waterbird distribution from the 2009/2010 waterbird survey programme is discussed in part five of the conservation objectives supporting document

A054 **Pintail *Anas acuta***

To maintain the favourable conservation condition of Pintail in Tralee Bay Complex SPA, which is defined by the following list of attributes and targets:

Attribute	Measure	Target	Notes
Population trend	Percentage change	Long term population trend stable or increasing	Waterbird population trends are presented in part four of the conservation objectives supporting document
Distribution	Range, timing and intensity of use of areas	No significant decrease in the range, timing and intensity of use of areas by pintail, other than that occurring from natural patterns of variation	Waterbird distribution from the 2009/2010 waterbird survey programme is discussed in part five of the conservation objectives supporting document

A062 Scaup *Aythya marila*

To maintain the favourable conservation condition of Scaup in Tralee Bay Complex SPA, which is defined by the following list of attributes and targets:

Attribute	Measure	Target	Notes
Population trend	Percentage change	Long term population trend stable or increasing	Waterbird population trends are presented in part four of the conservation objectives supporting document
Distribution	Range, timing and intensity of use of areas	No significant decrease in the range, timing and intensity of use of areas by scaup, other than that occurring from natural patterns of variation	Waterbird distribution from the 2009/2010 waterbird survey programme is discussed in part five of the conservation objectives supporting document

A130 Oystercatcher *Haematopus ostralegus*

To maintain the favourable conservation condition of Oystercatcher in Tralee Bay Complex SPA, which is defined by the following list of attributes and targets:

Attribute	Measure	Target	Notes
Population trend	Percentage change	Long term population trend stable or increasing	Population trends are presented in part four of the conservation objectives supporting document
Distribution	Range, timing and intensity of use of areas	No significant decrease in the range, timing and intensity of use of areas by oystercatcher, other than that occurring from natural patterns of variation	Waterbird distribution from the 2009/2010 waterbird survey programme is discussed in part four of the conservation objectives supporting document

A137 Ringed Plover *Charadrius hiaticula*

To maintain the favourable conservation condition of Ringed Plover in Tralee Bay Complex SPA, which is defined by the following list of attributes and targets:

Attribute	Measure	Target	Notes
Population trend	Percentage change	Long term population trend stable or increasing	Population trends are presented in part four of the conservation objectives supporting document
Distribution	Range, timing and intensity of use of areas	No significant decrease in the range, timing and intensity of use of areas by ringed plover, other than that occurring from natural patterns of variation	Waterbird distribution from the 2009/2010 waterbird survey programme is discussed in part five of conservation objectives supporting document

A140 Golden Plover *Pluvialis apricaria*

To maintain the favourable conservation condition of Golden Plover in Tralee Bay Complex SPA, which is defined by the following list of attributes and targets:

Attribute	Measure	Target	Notes
Population trend	Percentage change	Long term population trend stable or increasing	Population trends are presented in part four of the conservation objectives supporting document
Distribution	Range, timing and intensity of use of areas	No significant decrease in the range, timing and intensity of use of areas by golden plover, other than that occurring from natural patterns of variation	Waterbird distribution from the 2009/2010 waterbird survey programme is discussed in part five of the conservation objectives supporting document

A141 Grey Plover *Pluvialis squatarola*

To maintain/restore the favourable conservation condition of Grey Plover in Tralee Bay Complex SPA, which is defined by the following list of attributes and targets:

Attribute	Measure	Target	Notes
Population trend	Percentage change	Long term population trend stable or increasing	Population trends are presented in part four of the conservation objectives supporting document
Distribution	Range, timing and intensity of use of areas	No significant decrease in the range, timing and intensity of use of areas by grey plover, other than that occurring from natural patterns of variation	Waterbird distribution from the 2009/2010 waterbird survey programme is discussed in part five of the conservation objectives supporting document

A142 Lapwing *Vanellus vanellus*

To maintain the favourable conservation condition of Lapwing in Tralee Bay Complex SPA, which is defined by the following list of attributes and targets:

Attribute	Measure	Target	Notes
Population trend	Percentage change	Long term population trend stable or increasing	Waterbird population trends are presented in part four of the conservation objectives supporting document
Distribution	Range, timing and intensity of use of areas	No significant decrease in the range, timing and intensity of use of areas by lapwing, other than that occurring from natural patterns of variation	Waterbird distribution from the 2009/2010 waterbird survey programme is discussed in part five of the conservation objectives

A144 Sanderling *Calidris alba*

To maintain the favourable conservation condition of Sanderling in Tralee Bay Complex SPA, which is defined by the following list of attributes and targets:

Attribute	Measure	Target	Notes
Population trend	Percentage change	Long term population trend stable or increasing	Waterbird population trends are presented in part four of the conservation objectives supporting document
Distribution	Range, timing and intensity of use of areas	No significant decrease in the range, timing and intensity of use of areas by sanderling, other than that occurring from natural patterns of variation	Waterbird distribution from the 2009/2010 waterbird survey programme is discussed in part five of the conservation objectives supporting document

A149 **Dunlin *Calidris alpina alpina***

To maintain the favourable conservation condition of Dunlin in Tralee Bay Complex SPA, which is defined by the following list of attributes and targets:

Attribute	Measure	Target	Notes
Population trend	Percentage change	Long term population trend stable or increasing	Population trends are presented in part four of the conservation objectives supporting document
Distribution	Range, timing and intensity of use of areas	No significant decrease in the range, timing and intensity of use of areas by dunlin, other than that occurring from natural patterns of variation	Waterbird distribution from the 2009/2010 waterbird survey programme is discussed in part five of the conservation objectives supporting document

A156 Black-tailed Godwit *Limosa limosa*

To maintain the favourable conservation condition of Black-tailed Godwit in Tralee Bay Complex SPA, which is defined by the following list of attributes and targets:

Attribute	Measure	Target	Notes
Population trend	Percentage change	Long term population trend stable or increasing	Population trends are presented in part four of the conservation objectives supporting document
Distribution	Range, timing and intensity of use of areas	No significant decrease in the range, timing and intensity of use of areas by black-tailed godwit, other than that occurring from natural patterns of variation	Waterbird distribution from the 2009/2010 waterbird survey programme is discussed in part five of the conservation objectives supporting document

A157 Bar-tailed Godwit *Limosa lapponica*

To maintain the favourable conservation condition of Bar-tailed Godwit in Tralee Bay Complex SPA, which is defined by the following list of attributes and targets:

Attribute	Measure	Target	Notes
Population trend	Percentage change	Long term population trend stable or increasing	Population trends are presented in part four of the conservation objectives supporting document
Distribution	Range, timing and intensity of use of areas	No significant decrease in the range, timing and intensity of use of areas by bar-tailed godwit, other than that occurring from natural patterns of variation	Waterbird distribution from the 2009/2010 waterbird survey programme is discussed in part five of the conservation objectives supporting document

A160 ***Curlew *Numenius arquata****

To maintain the favourable conservation condition of Curlew in Tralee Bay Complex SPA, which is defined by the following list of attributes and targets:

Attribute	Measure	Target	Notes
Population trend	Percentage change	Long term population trend stable or increasing	Population trends are presented in part four of the conservation objectives supporting document
Distribution	Range, timing and intensity of use of areas	No significant decrease in the range, timing and intensity of use of areas by curlew, other than that occurring from natural patterns of variation	Waterbird distribution from the 2009/2010 waterbird survey programme is discussed in part five of the conservation objectives supporting document

A162 **Redshank *Tringa totanus***

To maintain the favourable conservation condition of Redshank in Tralee Bay Complex SPA, which is defined by the following list of attributes and targets:

Attribute	Measure	Target	Notes
Population trend	Percentage change	Long term population trend stable or increasing	Population trends are presented in part four of the conservation objectives supporting document
Distribution	Range, timing and intensity of use of areas	No significant decrease in the range, timing and intensity of use of areas by redshank, other than that occurring from natural patterns of variation	Waterbird distribution from the 2009/2010 waterbird survey programme is discussed in part five of the conservation objectives supporting document

A169 Turnstone *Arenaria interpres*

To maintain the favourable conservation condition of Turnstone in Tralee Bay Complex SPA, which is defined by the following list of attributes and targets:

Attribute	Measure	Target	Notes
Population trend	Percentage change	Long term population trend stable or increasing	Population trends are presented in part four of the conservation objectives supporting document
Distribution	Range, timing and intensity of use of areas	No significant decrease in the range, timing and intensity of use of areas by turnstone, other than that occurring from natural patterns of variation	Waterbird distribution from the 2009/2010 waterbird survey programme is discussed in part five of the conservation objectives supporting document

Conservation Objectives for : Tralee Bay Complex SPA [004188]

A179 Black-headed Gull *Chroicocephalus ridibundus*

To maintain the favourable conservation condition of Black-headed Gull in Tralee Bay Complex SPA, which is defined by the following list of attributes and targets:

Attribute	Measure	Target	Notes
Population trend	Percentage change	Long term population trend stable or increasing	Waterbird population trends are presented in part four of the conservation objectives supporting document
Distribution	Range, timing and intensity of use of areas	No significant decrease in the range, timing and intensity of use of areas by black-headed gull other than that occurring from natural patterns of variation	Waterbird distribution from the 2009/2010 waterbird survey programme is discussed in part five of the conservation objectives supporting document

A182 Common Gull *Larus canus*

To maintain the favourable conservation condition of Common Gull in Tralee Bay Complex SPA, which is defined by the following list of attributes and targets:

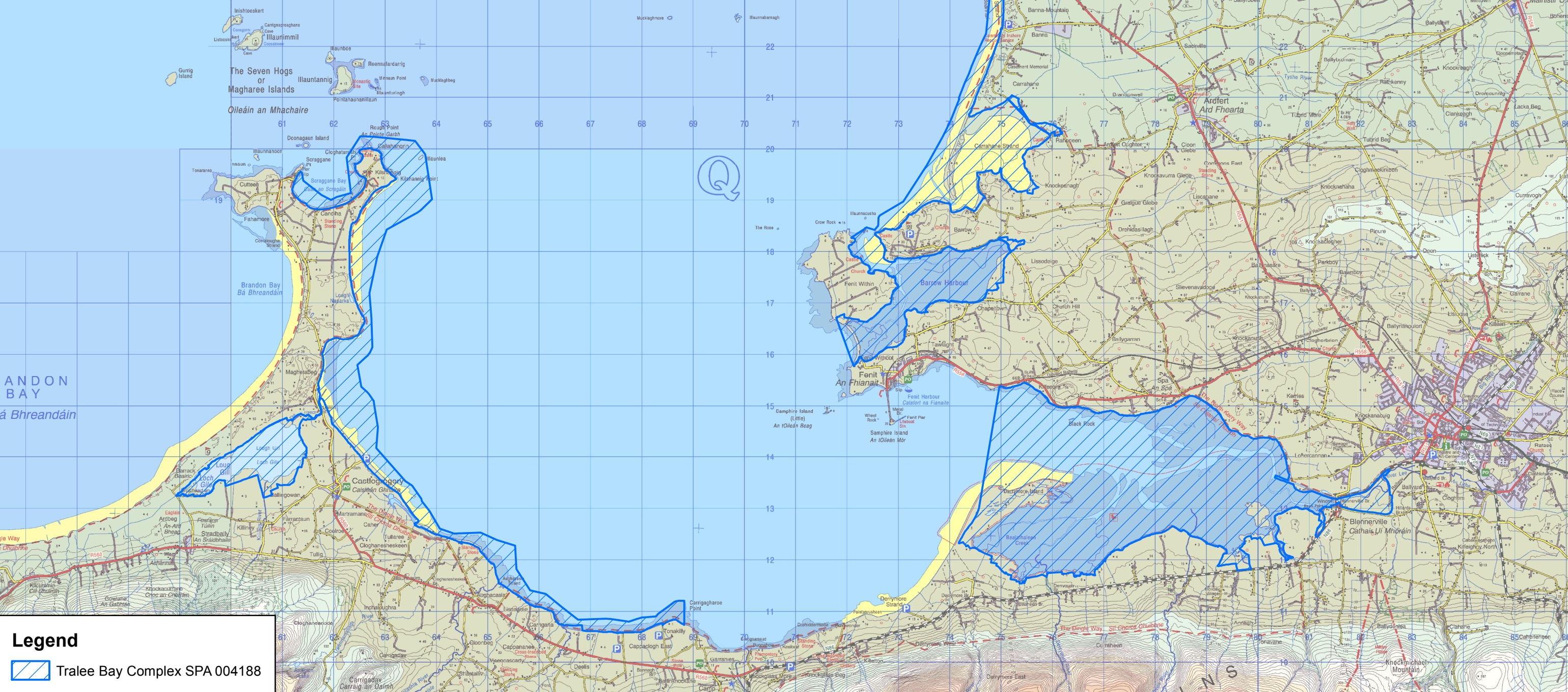
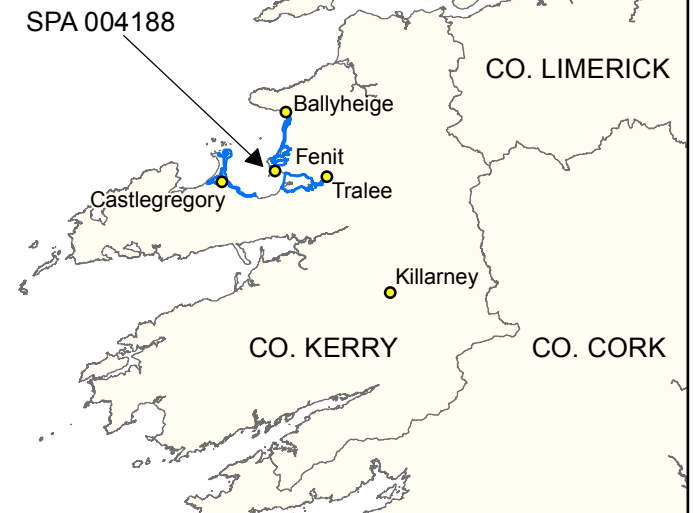
Attribute	Measure	Target	Notes
Population trend	Percentage change	Long term population trend stable or increasing	Population trends are presented in part four of the conservation objectives supporting document
Distribution	Range, timing and intensity of use of areas	No significant decrease in the range, timing and intensity of use of areas by common gull, other than that occurring from natural patterns of variation	Waterbird distribution from the 2009/2010 waterbird survey programme is discussed in part five of the conservation objectives supporting document

A999 Wetlands

To maintain the favourable conservation condition of the wetland habitat in Tralee Bay Complex SPA as a resource for the regularly-occurring migratory waterbirds that utilise it. This is defined by the following attribute and target:

Attribute	Measure	Target	Notes
Habitat area	Hectares	The permanent area occupied by the wetland habitat should be stable and not significantly less than the area of 3,657 hectares, other than that occurring from natural patterns of variation	The wetland habitat area was estimated as 3,657ha using OSi data and relevant orthophotographs. For further information see part three of the conservation objectives supporting document

ATLANTIC OCEAN
An tAigéan Atlantach



Legend

Tralee Bay Complex SPA 004188

An Roinn
Ealaíon, Oidhreachta agus Gaeltachta
Department of
Arts, Heritage and the Gaeltacht

**MAP 1:
TRALEE BAY COMPLEX SPA
CONSERVATION OBJECTIVES
SPA DESIGNATION**

Map to be read in conjunction with the NPWS Conservation Objectives Document.

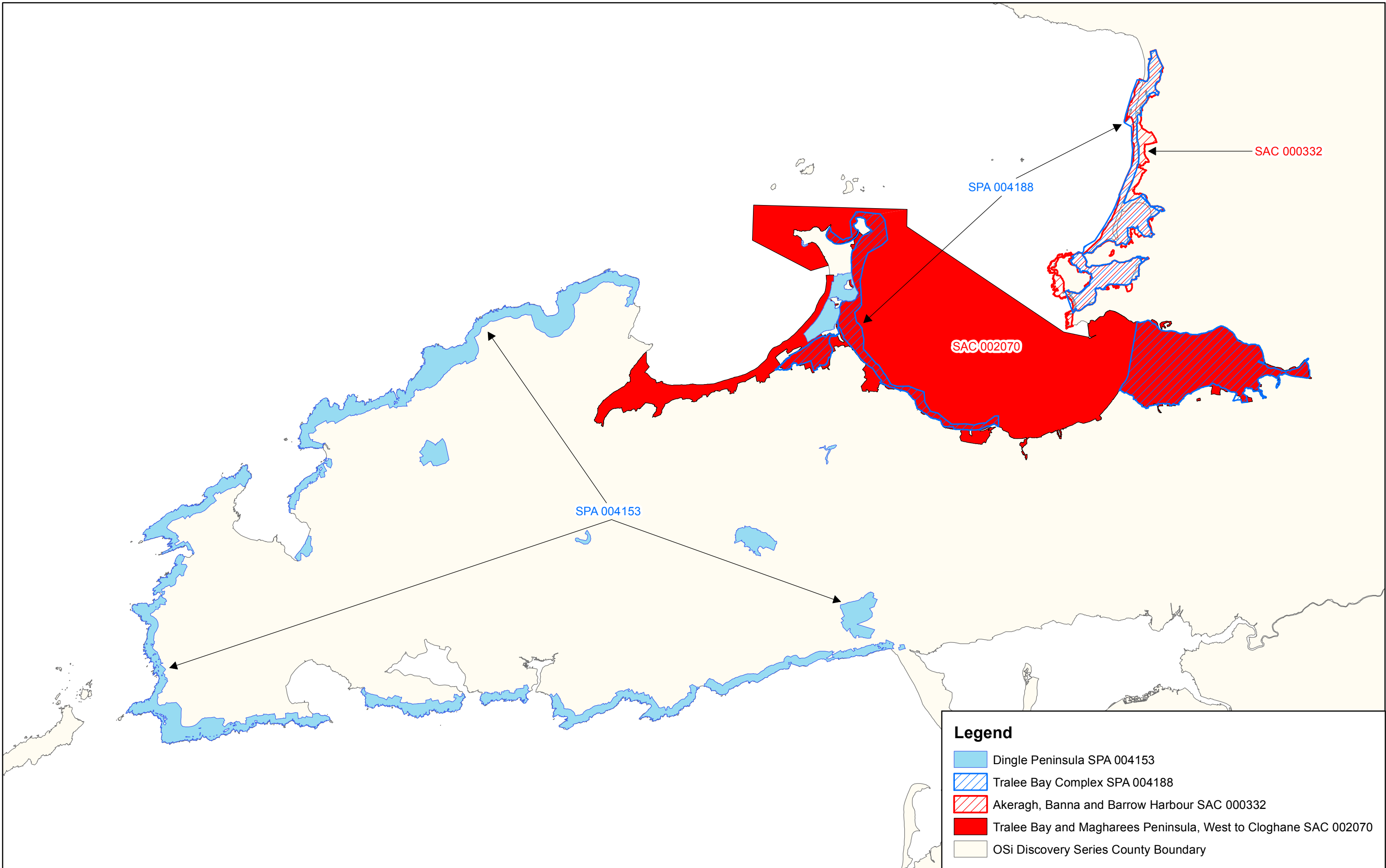
**SITE CODE:
SPA 004188; version 1.02. CO. KERRY**

0 1 2 3 4 5 km

The mapped boundaries are of an indicative and general nature only. Boundaries of designated areas are subject to revision.
Ordnance Survey of Ireland Licence No EN 0059214. © Ordnance Survey of Ireland Government of Ireland

Níl sna teorainneacha ar na léarscáilleana ach nod garshuíomhach ginearálta. Féadfar athbheithniithe a déanamh ar theorainneacha na gceantar comharthaith. Suirbhéarachta Ordonáis na hÉireann Ceadúnas Uimh EN 0059214. © Suirbhéarachta Ordonáis na hÉireann Rialtas na hÉireann

**Map Version 1
Date: March 2014**



Legend

- Dingle Peninsula SPA 004153
- Tralee Bay Complex SPA 004188
- Akeragh, Banna and Barrow Harbour SAC 000332
- Tralee Bay and Magharees Peninsula, West to Cloghane SAC 002070
- OSi Discovery Series County Boundary